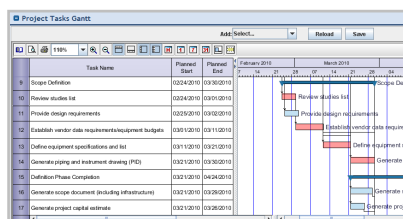


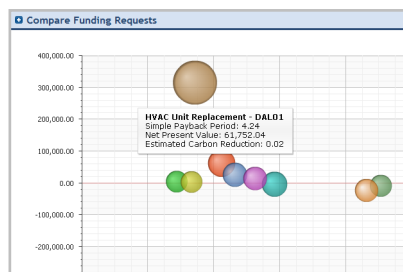
TRIRIGA Projects™



Generate higher returns from your capital programs and projects



Critical-path schedules focuses resources to deliver programs and projects on-time



Comparative analysis engine evaluates which requests and projects to select and fund

Today's Challenges

In today's capital-constrained economy, many organizations face limited financial resources and cannot afford wasteful programs and projects that fail to meet planned outcomes and produce measurable business improvements.

To ensure that they use these limited capital funds to deliver strategic goals and near-term objectives, executives and project managers must determine which requests to fund and manage through successful completion.

However, many depend on disparate databases and systems that lack the information and controls to identify underperforming facilities, to analyze financial and environmental benefits of planned capital investments and to automate project management controls and alerts.

Whether an organization is considering IT consulting and development, operations and production, or facility and energy efficiency projects, a comprehensive analysis of the operational, financial and environmental benefits of each request must be compared to alternative uses of the available capital to ensure the highest returns.

TRIRIGA Projects: Enterprise Project Management software to achieve the highest possible returns from your capital projects

TRIRIGA Projects delivers increased financial returns and accelerates project schedules through advanced project planning and project management features. Specifically, TRIRIGA's enterprise project management software identifies priorities for funding allocations within capital programs, analyzes project risks and financial benefits and automates project management controls and alerts essential to deliver ad-hoc projects and complex programs of any size in an effective manner.

“TRIRIGA has consistently delivered high-value functions to its products and with the new version of TRIRIGA Projects they’ve done it again. The software provides strategic decision-making tools, rather than just tactical applications, and it hits on all of the top priorities that executives need to accelerate and deliver cost-effective capital programs.” - Robert Fitzgerald, Nokia

TRIRIGA Projects helps program executives and project managers increase the effectiveness of all types of capital projects - construction, IT and environmental - through advanced performance metrics, project portfolio analysis and an automated workflow engine. To help organizations deliver high return projects, TRIRIGA Projects provides unique features that:

- Streamline identification of funding priorities
- Analyze project risks and rewards to improve decision support
- Increase effectiveness of project delivery to accelerate schedules

Identifies program funding priorities to streamline project portfolio management

To achieve the long-term goals and short-term objectives that your organization relies upon, TRIRIGA Projects delivers a centralized data repository, integrated RSMeans® construction cost data and predefined enterprise project management dashboards to identify program funding priorities.

Built on a centralized data repository of program, project and support information, TRIRIGA Projects consolidates financial and environmental data and analyzes the information to expose data relationships too difficult and costly to create without enterprise project management software. A predefined Microsoft® Project connector loads tasks and task dependency data directly from project schedules provided by consultants and contractors.

Funding Requests increase the accuracy of project cost estimates with integrated RSMeans® construction cost data. Automated funding analysis calculates the financial and environmental returns from your planned projects.

Predefined enterprise project management dashboards present the program and project information, actions and reports you need directly from your login.

Simplifies complex planning analysis to achieve better outcomes

Once Funding Requests have been gathered, TRIRIGA Projects provides detailed analytical capabilities which compile and compare requested funding demands, available fund sources with program objectives and anticipated risks at a program level.

TRIRIGA Projects provides comprehensive analysis of funding requests to improve investment decisions. This “value calculator” grinds through complex formulas to evaluate the costs, financial returns and risks associated with each funding opportunity so that only the best projects are selected.

TRIRIGA Projects delivers a side-by-side comparison of investment costs, payback periods, estimated annual savings and environmental returns to determine which projects generate the highest returns.

Graphical summaries within TRIRIGA Projects compare investment costs, payback period and cost savings from funding requests alongside return on investment and internal rate of return for improved financial decisions. Embedded objective and risk ratings rank the fit of funding requests with program and business goals.

Streamlines project control to accelerate project schedules

TRIRIGA Projects delivers advanced project execution and control capabilities required to effectively complete projects on-time, within-budget and with the planned quality. Embedded workflows automate project management processes and critical alerts to reduce risk of project cost and schedule over-runs, while vendor management controls generate baseline, planned and actual schedules from templates and contractor-supplied Microsoft Project files to increase consultant and contractor compliance with contracted terms and reduce costly project delays.

TRIRIGA Projects’ critical-path schedules focus resources to deliver programs and projects on-time. A powerful workflow engine automates the creation and tracking of critical activities and tasks that accelerate completion of energy efficiency and other projects.

TRIRIGA Projects provides automated alerts and actions to guide critical processes to reduce project inefficiencies. Project managers get updated with critical alerts and action items to drive faster decisions. Predefined workflows generate action items, assign resources and track approvals for project processes such as Requests for Information (RFI), design changes and contract submittals through completion to maintain peak project efficiency. Integrated vendor management controls increase contract compliance to reduce costly schedule delays. Robust bid analysis compares consultant and contractor bids to improve vendor selection. Embedded contract and change order controls reduce risk of project schedule overruns, while performance metrics monitor and flag contractors that require corrective actions.

TRIRIGA: Uniquely positioned to deliver customer success

Named by foremost analyst firms AMR Research as the leader in sustainability software and IWMSconnect as a leader in Integrated Workplace Management Systems, TRIRIGA provides enterprise sustainability, real estate and facilities management solutions. TRIRIGA delivers the industry’s most advanced capabilities such as configurable workflow and performance analytics engines to reduce operating costs, increase return on assets and achieve sustainability goals for mid- and large-sized commercial and public enterprises, including more than one-third of the Fortune 100.

To find out more about how TRIRIGA Projects generates higher returns from capital programs and projects, contact an expert at 702-932-4444.

Product Features

- Pre-defined, role-based portals for Program Manager, Project Executive, Project Manager and Project Team Member
- Pre-loaded CSI MasterFormat™ construction classifications
- Funding Request Manager
- Earned Value Modeling and Analysis
- Capital Project Budget Spend Plans
- Capital Project Cash Flow Analysis
- Program and project task rollup
- Program-level Project Forecast vs. Funding Summary Graph
- Bi-directional Microsoft® Project schedule integrator
- Funding Request comparative analysis engine
- Gantt critical-path schedule management engine
- Embedded ARRA and Sarbanes-Oxley controls and reports
- TRIRIGA Off-line form for bid submission

- Program Manager
- Capital Project Manager
- Facility Project Manager
- Project Group Manager
- Funding Source Manager
- Submittal Management
- Cost Management
- Procurement Management
- Proposal Management
- Payment Management
- Budget Management
- Checklist Management
- Contract Management
- Correspondence Management
- Daily Journal Management
- Design Management
- Document Management
- Inspection Management
- Issue and Change Management
- Meeting Management
- Permit Management
- Progress Report Management
- Request For Information Management
- Risk Management
- Safety Management
- Schedule Management

Metrics

TRIRIGA Projects includes 59 predefined reports including:

- Aggregate Capital Projects - Budget, Invoiced, Forecast for PM
- Aggregate Capital Projects - Projects by Client
- Aggregate Capital Projects - Total Budget by Manager
- Aggregate Projects by Status
- Capital Project Status Report
- Capital Project Status for Environmental Planner Report
- Capital Projects by Classification Report
- Capital Projects by Location Report
- Capital Projects by Status Report
- Change Order Status Report
- Commitments vs. Actual Report
- Construction Projects Pipeline
- Contract Execution Report
- Facilities Project Status Report
- Financial and Activity Report
- Funding Notification Report
- Funding Source Summary Report
- My Contract Execution Report
- My Active Projects Report
- My Tasks Report
- Overall Project Issues Report
- Overall Project Performance by Region Report
- Overdue Task Items - All Projects Report
- Potential Change Order Summary Report
- Program Specific American Recovery and Reinvestment Act (ARRA) Report
- Program Financial Summary Report
- Project Cost Summary - All Projects Report
- Project Performance Report
- Projects Completed, Ongoing and Planned Report
- RFI Summary Report
- Staff Assessment Report
- Tasks Due Report

IWMS Products optionally included in TRIRIGA Projects solution:

- TRIRIGA Off-line
- TRIRIGA RSMean Integration
- TRIRIGA Workplace Performance Management for Projects



The Global IWMS Leader

6720 Via Austi Parkway, Suite 500, Las Vegas NV 89119 | 702-932-4444 | 888-TRIRIGA | www.tririga.com | © 2011 TRIRIGA, Inc. an IBM Company

TRIRIGA and TRIRIGA's symbols, slogans, emblems, logos, designs, name, product names, other indicia of origin and other proprietary rights notices and markings are registered trademarks, trademarks or service marks of TRIRIGA, Inc. an IBM Company. Other trademarks or service marks are the properties of their respective owners. This document is for informational purposes only and is subject to change without notice. Transfer of Business for TRIRIGA is planned by IBM on November 1, 2011.